

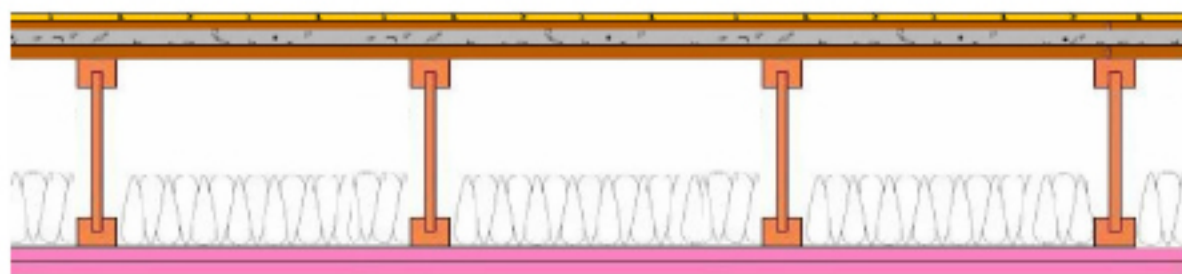
DIRECT CONNECT ACOUSTIC ASSEMBLY



FLOOR/CEILING ASSEMBLY DIRECT FIX TO TJI



DSA TJI no resilient FSTC 40 FIIC 32



CONSTRUCTION

- * Hardwood Flooring
- * 1/2" Plywood
- * 1-1/2" Light Weight Gypsum Concrete
- * 3/4" Plywood
- * 16" TJI joist
- * 3.5" Fiberglass Batt Insulation
- * 2 layers 5/8" Gypsum Direct Attached

Test report: DSA 187003-2

Test report: DSA 187003-1



**FIELD SOUND
TRANSMISSION
CLASS**

FSTC 40



Fire resistance ratings
ANS/UL
L518, L542

**FIELD IMPACT
ISOLATION
CLASS**

FIIC 32

212.402.3668
800.262.8339

360 West 34th St, 14G
New York, NY 10001

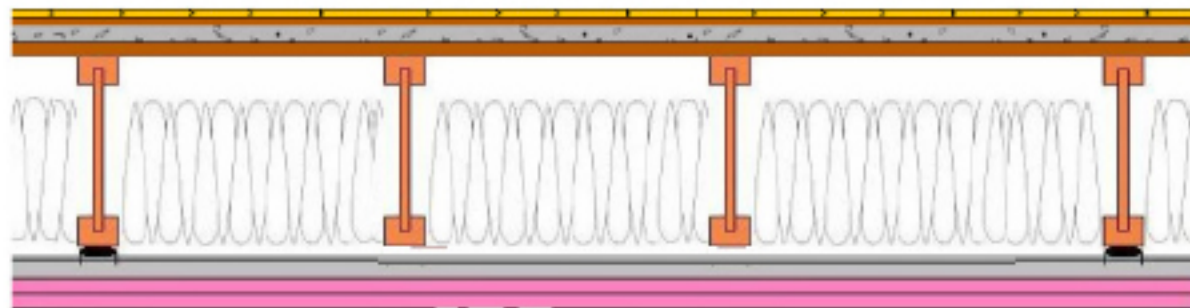
Mason@NoiseControl.net
www.QWYATT.com

RSIC-1 ACOUSTIC ASSEMBLY
FLOOR/CEILING ASSEMBLY



DIRECT FIX TO TJI

DSA TJI QRSIC-1 FSTC 55 FIIC 60



CONSTRUCTION

- * Hardwood Flooring
- * 1/2" Plywood
- * 1-1/2" Light Weight Gypsum Concrete
- * 3/4" Plywood
- * 16" TJI joist
- * 12" Mineral wool 3.5" Fiberglass Batt Insulation
- * RSIC-1 Clips at 48" o.c.
- * 7/8" Drywall Furring Channel 24" o.c.
- * 2 layers 5/8" Gypsum Direct Attached

Test report: DSA 720041-IIIC1 NNR1



**FIELD SOUND
 TRANSMISSION
 CLASS**

FSTC



**Fire resistance ratings
 ANS/UL
 L518, L542**

**FIELD IMPACT
 ISOLATION
 CLASS**

FIIC 60

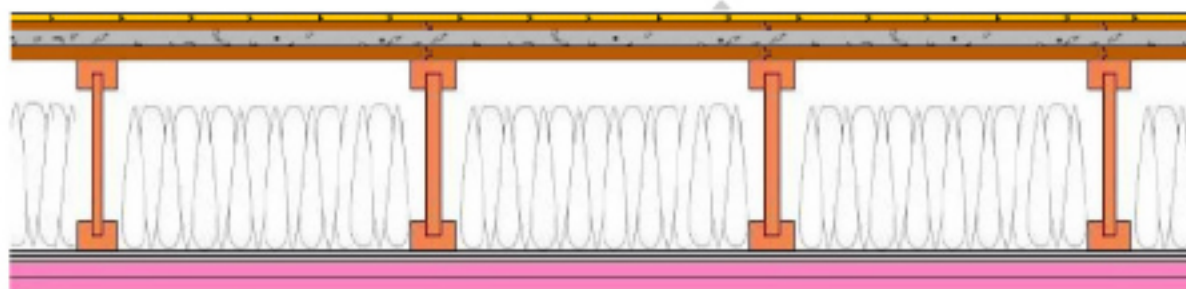
RC CHANNEL ACOUSTIC ASSEMBLY



FLOOR/CEILING ASSEMBLY DIRECT FIX TO TJI





DSA TJI rc channel FSTC 53 FIIC 44



CONSTRUCTION

- * Hardwood Flooring
- * 1/2" Plywood
- * 1-1/2" Light Weight Gypsum Concrete
- * 3/4" Plywood
- * 16" TJI joist
- * 13.5" Fiberglass Batt Insulation
- * Rc Channel
- * 2 layers 5/8" Gypsum Direct Attached

Test report: DSA 720041-IIC2-NNR2

	
FIELD SOUND TRANSMISSION CLASS	Fire resistance ratings ANS/UL L518, L542
FSTC 53	FIELD IMPACT ISOLATION CLASS
FSTC 53	FIIC 44

212.402.3668
800.262.8339

360 West 34th St, 14G
New York, NY 10001

Mason@NoiseControl.net
www.QWYATT.com